

【 CiRA-j-1221 】 Morphology of iPSC colonies

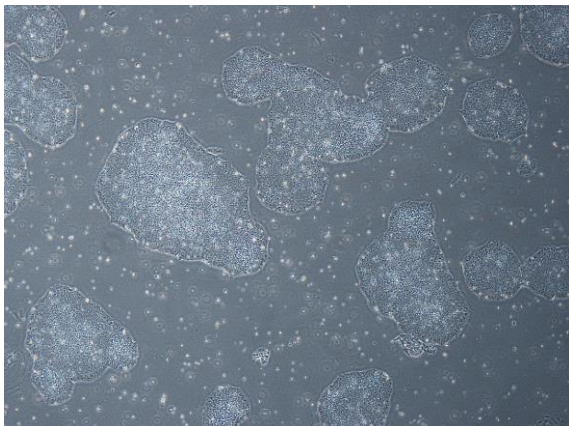
CiRA-j-1221-A: passage-2



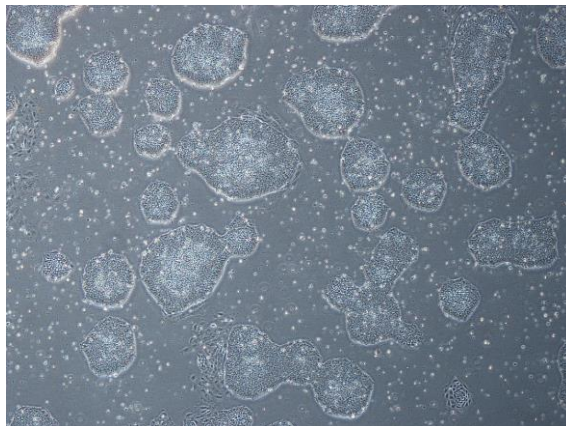
CiRA-j-1221-B: passage-2



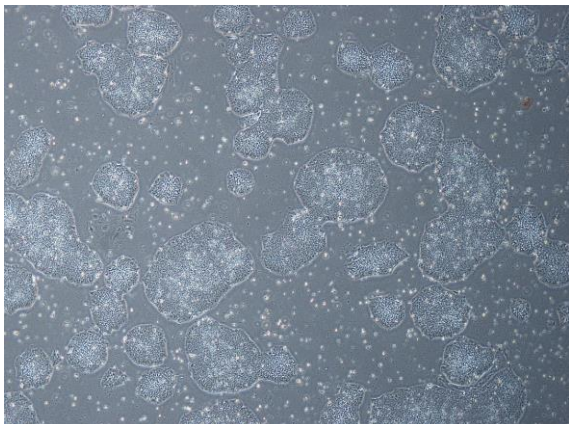
CiRA-j-1221-C: passage-2



CiRA-j-1221-D: passage-2



CiRA-j-1221-E: passage-2



CiRA-j-1221-F: passage-2



(All images were captured at 4x magnification)